



TRAINING PATHWAY

ENABLEMENT TEAM TO HIRE

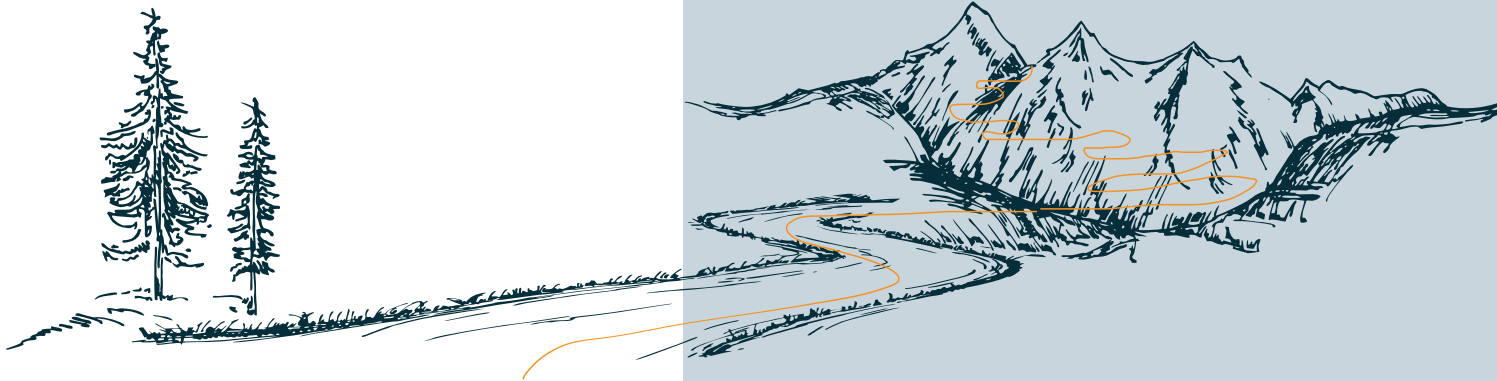
FROM ENTRY TO TEAM EXCELLENCE



INFRALOVERS

YOUR CHALLENGES

- > Different **Skill Levels**
- > **Multiple Distributed Teams**
- > **Complex and Outdated Infrastructure**



CRAWL WALK RUN

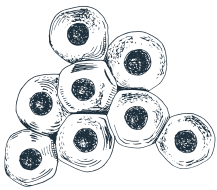
ROME WASN'T BUILT
IN A DAY.

The first step is to **harmonize** the landscape and gradually bring it to a **common quality level**.

Crawl Learn the basics & achieve first successes

Walk Deepen knowledge & apply it in more complex scenarios

Run Autonomous teams driving innovation and scalability



THE BEGINNING

STANDARDIZED TRAININGS

Our Enablement Team offers proven standard training programs that lay the foundation for your further development.

With **over 1,500 training hours per year**, we are your reliable partner for a successful start. 80% of our clients continue their learning path with **customized solutions after completing standard training**, and 30% trust us to support their development over several years.

Our key focus areas include the following topics:

HASHICORP

IAC

CLOUD NATIVE

DEVOPS, CI/CD

IT SECURITY

AI

ENABLEMENT TEAM TO HIRE

THE SOLUTION

The Enablement Team to Hire concept helps companies build more efficient teams and overcome challenges in recruiting, training, and developing professionals. **Our approach goes beyond just training your teams—we actively support them in applying what they’ve learned.**



*We help you build more **efficient teams** and overcome challenges by not only training your teams but also **actively supporting** them in applying their **knowledge** through our **hands-on labs**.*

OUR METHODS

STANDARDIZED TRAININGS

Imparting proven fundamentals to kickstart the adoption of new technologies or methods such as Terraform Foundations, Vault Enterprise, and Cloud Native GitOps.

E.G.: STANDARDIZED TRAINING

Terraform Foundations,
Vault Enterprise,
Cloud Native GitOps.

WORKSHOPS ON SPECIALIZED TOPICS

Intensive workshops tailored to your specific needs, focusing on your company's unique challenges and technologies.

E.G.: CUSTOM TRAINING

Automatic Testing

PROJECT COLLAB. & COACHING

Direct support in your projects by experienced coaches who provide hands-on solutions and strengthen your teams in the long term.

BSP. EXAMPLE COLLABORATION & COACHING

Promoting autonomy and scalability.



GET YOUR PERSONALISED QUOTE: SALES@INFRALOVERS.COM

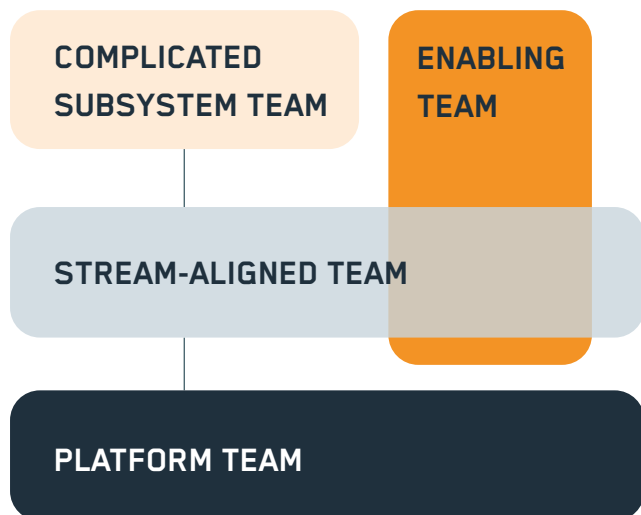
STANDARDIZED TRAININGS

Our standardized training programs provide the perfect entry point to understand and apply the fundamentals of modern technologies. They are ideal for teams looking to establish a solid foundation for tackling more advanced challenges. Here's why they are the perfect starting point:

- > **Proven Knowledge:** Our training programs are based on established methods and tools that have been tested in practice.
- > **Comprehensive Coverage:** We cover the key technologies essential for automation, containerization, and cloud management.
- > **Hands-on Approach:** Each training includes hands-on labs that your teams can directly apply.

TEAM TOPOLOGIES*

The proven concept of Team Topologies provides clear roles and structures with Stream-Aligned Teams, Enabling Teams, Platform Teams, and Complicated Subsystem Teams, enabling efficient and autonomous work.



*Team Topologies – Organizing Business and Technology Teams for fast flow. Von Matthew Skelton & Manuel Pais

HASHICORP

- > **Terraform Foundations**
- > **Advanced Terraform HCP**
- > **Terraform Plugin Development**
- > **Terraform Testing**
- > **Vault Enterprise**
- > **Consul Enterprise**
- > **Nomad Essentials**

INFRASTRUCTURE AS CODE

- > **Ansible Essentials**
- > **Ansible AWX**
- > **CINC Essentials**
- > **Terraform Foundations**
- > **Advanced Terraform HCP**
- > **Terraform Plugin Development**
- > **Terraform Testing**

CLOUD NATIVE

- > Cloud Native **Bootcamp**
- > Cloud Native **Essentials**
- > Cloud Native **Observability**
- > Cloud Native **GitOps**

DEVOPS, CI/CD

- > Cloud Native **GitOps**
- > **GitLab Essentials**
- > **GitHub Essentials**
- > **Agile Testing Essentials - Ruby**
- > **Agile Testing Essentials - Python**
- > **Agile Testing & CI/CD Bootcamp**
- > **Terraform Testing**

IT SECURITY

- > **Mondoo Essentials**
- > **Mondoo Advanced**
- > EU **NIS2** Guidelines

ARTIFICIAL INTELLIGENCE

- > **AI Coding Essentials**
- > **AI Essentials for Engineers**

PLATFORM ENGINEERING

- > **Backstage Essentials**
- > **Crossplane Essentials**

INFRALOVERS LEARNING PATHWAY



CONSUL ENTERPRISE

CROSSPLANE ESSENTIALS

NOMAD ESSENTIALS

BACKSTAGE ESSENTIALS

CINC ESSENTIALS

AGILE TESTING ESSENTIALS

AGILE TESTING CI/CD BOOTCAMP

EU NIS2 GUIDELINES

MONDOO ADVANCED

MONDOO FOUNDATIONS

VAULT ENTERPRISE

CLOUD NATIVE OBSERVABILITY

TERRAFORM PLUGIN DEVELOPMENT

ANSIBLE AWX

TERRAFORM TESTING

ADVANCED TERRAFORM HCP

CLOUD NATIVE BOOTCAMP

GITOPS

ANSIBLE ESSENTIALS

CLOUD NATIVE ESSENTIALS

TERRAFORM FOUNDATIONS

GITHUB ESSENTIALS

GITLAB ESSENTIALS



CUSTOM SOLUTIONS

CUSTOMIZED TRAININGS

Once the fundamentals are learned, we tailor our training programs to your specific needs. Our team analyzes your unique challenges and develops customized solutions.

Discover some of our **showcases** on the following page.



A LITTLE BIT OF THIS

A LITTLE BIT OF THAT

YOUR PERFECT MATCH

CONSULTING SOLUTIONS

CUSTOM SOLUTIONS

Our consulting solutions are as diverse as our clients. We work closely with you to analyse your unique challenges and goals. Based on this, we develop customised strategies that pave the way to success.

PROJECT COMPANION

Our consultants specialise in innovative solutions to ensure your clients are at the forefront of IT. From optimising the efficiency of project processes to providing specialised training programmes for teams, we are your strategic partner for project success.

LONG-TERM PARTNERSHIP

We value long-term partnerships and support our customers step by step in the development of their projects. Our collaborative approach adapts to changing needs, optimises strategies, integrates new technologies and improves processes for continued success.

SHOWCASES

We are proud to support businesses with tailored solutions and cutting-edge technology. Here's a glimpse into some of the industries of our most exciting projects.

You can find more success stories on our website at: infralovers.com/showcases. Maybe we'll write the next story together!



TELECOMMUNICATION INDUSTRY

Development of a customized training program for a leading German telecommunications company. The program was tailored to specific requirements.

Optimization and automation of the testing landscape, shortening development cycles and improving quality assurance through the use of modern CI/CD pipelines.

CLOUD NATIVE

DEVOPS, CI/CD

INFRASTRUCTURE AS CODE

CONSULTING & TRAINING

LOGISTICS

Supporting a large European logistics company on its journey to infrastructure automation with Terraform and Chef Infra. Results: Autonomous infrastructure automation, efficient implementation of cloud services, and comprehensive training initiatives that empowered the team to achieve sustainable transformation.

HASHICORP

INFRASTRUCTURE AS CODE

CONSULTING & TRAINING

FINANCIAL SERVICES

Supporting European banks in migrating to modern, automated infrastructures. Results: Improved operational efficiency, reduced manual errors, and strengthened sustainability, security, and future viability.

HASHICORP

INFRASTRUCTURE AS CODE

TRAINING

TRANSPORTATION

Supporting a German railway company in modernizing the IT systems onboard its trains. Results: Efficient, automated updates despite poor network coverage, minimized downtime, and optimized IT security and media quality. Additionally, we have supported several airlines with HashiCorp training to optimize their infrastructure processes.

INFRASTRUCTURE AS CODE

HASHICORP

CONSULTING & TRAINING

ABOUT INFRALOVERS

Our courses combine knowledge from our previous and ongoing consulting projects to deliver practical, hands-on experiences.

Based in Austria, we provide European-wide training and workshops available in German and English. Due to our positive experiences and the flexibility it offers, we mostly give our courses remotely. If requested, we are also available on-site.

As official HashiCorp partner we deliver HC-Trainings in Europe and the US east coast since January 2022.

Our Experienced trainers have built up years of experience in our consulting projects. We only teach what we have personally experienced, tested, and applied with clients. This is the only way we can credibly and professionally teach our knowledge to our training participants.

DI Edmund Haselwanter
CEO, Consultant & Trainer



FACT-SHEET

LANGUAGE & LOCATION

All our courses can be held in english or german. We mostly teach remotely but are also available on-site.

EXPERIENCED TRAINERS

Our experienced trainers have years of field experience and evolve constantly.

CLOUD FOCUS

Our most loved trainings are about HashiCorp, Cloud Native, GitLab, Kubernetes & Ansible.

EU BASED

Infralovers is an Austrian based company in Graz.

1.560

AVERAGE **HOURS**
OF COURSES GIVEN
PER YEAR

94 %

OF ATTENDEES WOULD
LOVE TO ATTEND
FURTHER COURSES.

2013

10+ YEARS OF
EXPERIENCE
AND KNOWLEDGE.

GET YOUR PERSONALISED QUOTE: SALES@INFRALOVERS.COM



YOUR PATH TO EXCELLENCE

ENABLEMENT PATHWAY OVERVIEW

CRAWL

Introduction to standardized training.

WALK

Adaptation to specific challenges.

RUN

Achieving team excellence through coaching & consulting.

LONG-TERM COLLABORATION

Whether you aim for a short-term improvement or a deep transformation, we remain your partner for sustainable success. With us, you'll develop high-performance teams that can thrive in a dynamic world.



Infralovers GmbH

Janneckweg 3/3
8042 Graz
Österreich

team@infralovers.com
+43 676 3282554

www.infralovers.com

Non-binding course offer, subject to adaptations.
Errors and omissions excepted.